


- | | | |
|---|--|--|
| <ul style="list-style-type: none"> ● Accommodation and food service activities ● Administrative and support service activities ● Agriculture, forestry and fishing ● Arts, entertainment and recreation ● Construction ● Education ● Electricity, gas, steam and air-conditioning supply ● Financial and insurance activities ● Human health and social work activities ● Information and communication ● Manufacturing ● No activity | <ul style="list-style-type: none"> ● Other service activities ● Professional, scientific and technical service activities ● Public administration and compulsory social security service activities ● Real estate activities ● Transportation and storage ● Unattainable ● Vacant unit ● Water reserve ● Water supply, sewerage, waste management and remediation activities ● Wholesale and retail trade, repair of motor vehicles and motorcycles ● IRT bus stops | <ul style="list-style-type: none"> ■ Road reserve ■ Under construction ■ Vacant land ■ Private residence ■ Suburbs ■ Land parcel ■ Greenbelt ■ Open space ■ Vacant building ■ Wetlands |
|---|--|--|



CITY OF CAPE TOWN
ISIXEKO SASEKAPA
STAD KAAPSTAD


THIS MAP WAS COMPILED BY:
CITY MAPS

Development Information and GIS

Tel: +27 21 487 2711
Fax: +27 21 487 2821
city.maps@capetown.gov.za

Please note:

- Business names, economic activity and contact details were collected through primary data collection.
- Business contact details were verified directly from the business' website.
- In the event that the name or economic activity of a business could not be identified during primary data collection and it does not have an active website or contact details available to confirm business details, it has been listed as unattainable.



0 65 130 260 390
Metres

1: 18 000

Transverse Mercator Projection,
Central Meridian 19° East,
WGS84 Ellipsoid using the
Hartebeeshoek194 Datum

INDUSTRIAL SURVEY
KILLARNEY INDUSTRIA



CITY OF CAPE TOWN
ISIXEKO SASEKAPA
STAD KAAPSTAD



INVEST CAPE TOWN
COLLABORATE | ENABLE | PROMOTE

For more information on this industrial area contact:
Economic.Research@capetown.gov.za

Produced by Enterprise and Investment and
Organisational, Policy and Planning Departments:
Directorate of the Mayor



Killarney Industria | 2017

KILLARNEY INDUSTRIA AT A GLANCE

Killarney Gardens is 19.6 km away from Cape Town CBD via the N1 route. Killarney Gardens is 12 minutes away from Montague Gardens via the M5 route and the Cape Town International Airport is approximately 26 minutes away via Jakes Gerwel Drive on the M7.

Killarney Gardens Industria is geographically spread across 500 land parcels of which 84% (420 land parcels) is occupied by economic activity, while the remaining 16% (80 land parcels) is not occupied by any economic activity.

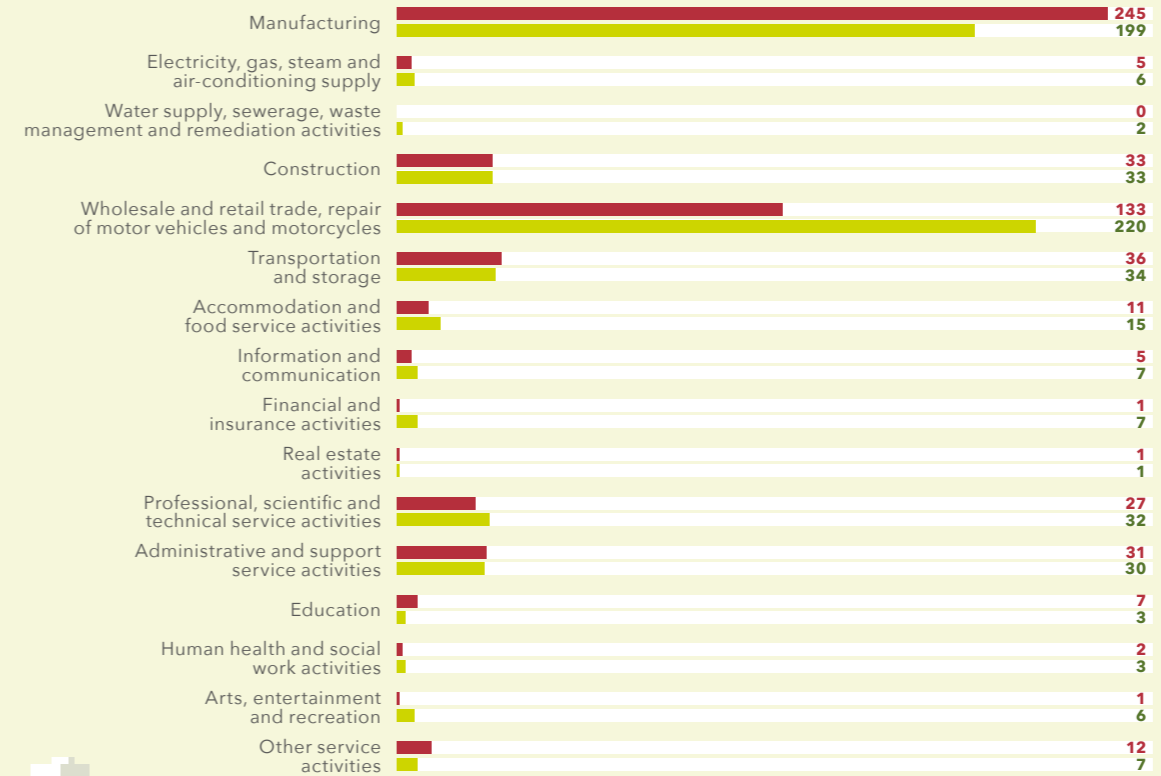
The economically active 420 land parcels in Killarney Gardens host about 728 businesses. Of the 728 businesses, 605 businesses' economic activity could be positively identified while the remaining 123 businesses' economic activity could not be identified.

500 LAND PARCELS **728 BUSINESSES**



TREND IN ECONOMIC ACTIVITY BETWEEN 2014 AND 2016

NO. OF BUSINESSES: 2014 VS 2016



Industrial area boundaries are subject to change over time so caution must be exercised in interpreting increases or decreases in the number of businesses per sector over the period.

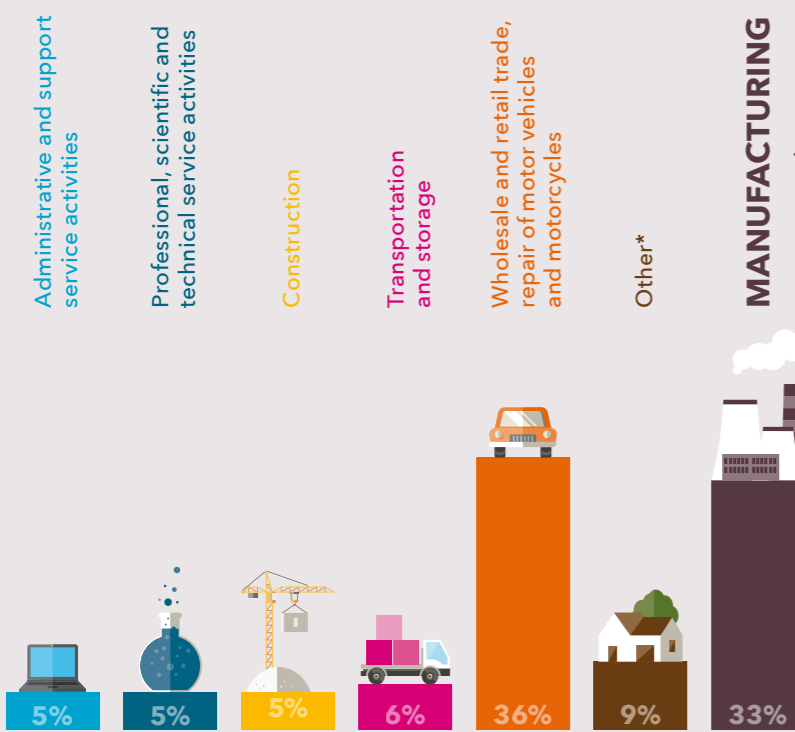
Manufacturing
DECREASED BY 46

Wholesale and retail trade, repair of motor vehicles and motorcycles
INCREASED BY 87

Financial and insurance activities
INCREASED BY 6

Education
DECREASED BY 4

ECONOMIC ACTIVITY OF BUSINESSES



Number of manufacturing businesses per division

Chemicals & chemical products	11
Computer, electronic & optical products	3
Electrical equipment	4
Fabricated metal products, except machinery and equipment	42
Food products	16
Furniture	10
Machinery and equipment not classified elsewhere	19
Motor vehicles, trailers and semi-trailers	6
Other manufacturing	6
Other non-metallic mineral products	8
Other transport equipment	4
Paper and paper products	3
Printing and reproduction of recorded media	2
Repair and installation of machinery and equipment	10
Rubber and plastic products	29
Textiles	5
Wearing apparel	1
Wood and product of wood and cork, except furniture; manufacture of articles of straw and plaiting materials	17

PROPERTIES AVAILABLE

63
VACANT LAND PARCELS

RANGE OF SQM LAND:
249 000 m² - 305 000 m²

LAND PARCEL SIZE RANGE:



1
VACANT BUILDING

RANGE OF SQM LAND*:
1 000 m² - 2 000 m²

LAND PARCEL SIZE RANGE:



*Accommodation and food service activities; Information and communication; Financial and insurance activities; Other services; Electricity, gas, steam and air-conditioning supply; Arts, entertainment and recreation; Education; Human health and social work activities; Water supply, sewerage, waste management and remediation activities; Real estate activities

*sqm of land parcel on which the business sits.